

Regional Transportation Coordinating Council Planning Process

Open House #3 (Virtual)

Mankato/North Mankato Area Planning Organization

August 18, 2020

Agenda

- Project Background
- Current Activities
 - Stakeholder Outreach Update
 - RTCC Goals
 - RTCC Work Plan
 - RTCC Organizational Plan
- Project Next Steps
 - Supporting Resolution/Host Agency Coordination

Regional Transportation Coordinating Council

About the Regional Transportation Coordinating Council (RTCC)

- Brings transportation stakeholders together to provide safe and effective transportation, fill gaps, develop policies, coordinate gaps, and address regional issues.
- Stakeholders include:
 - Customers (counties, human services, senior service, workforce development, people with disabilities, and more).
 - Providers (public, private, and nonprofit organizations that provide transportation).

Background

- Regionalization of transportation needs
- RTCCs consist of stakeholders interested in improving mobility for “transportation disadvantaged” – older adults, individuals with disabilities, individuals with low incomes, and/or military veterans.
- MnDOT Office of Transit and Active Transportation offers financial support and technical assistance to develop and implement RTCC’s
- General focus on Blue Earth, Brown, Faribault, Le Sueur, Martin, Nicollet, Waseca, Sibley, and Watonwan Counties
- Plan completion September 2020

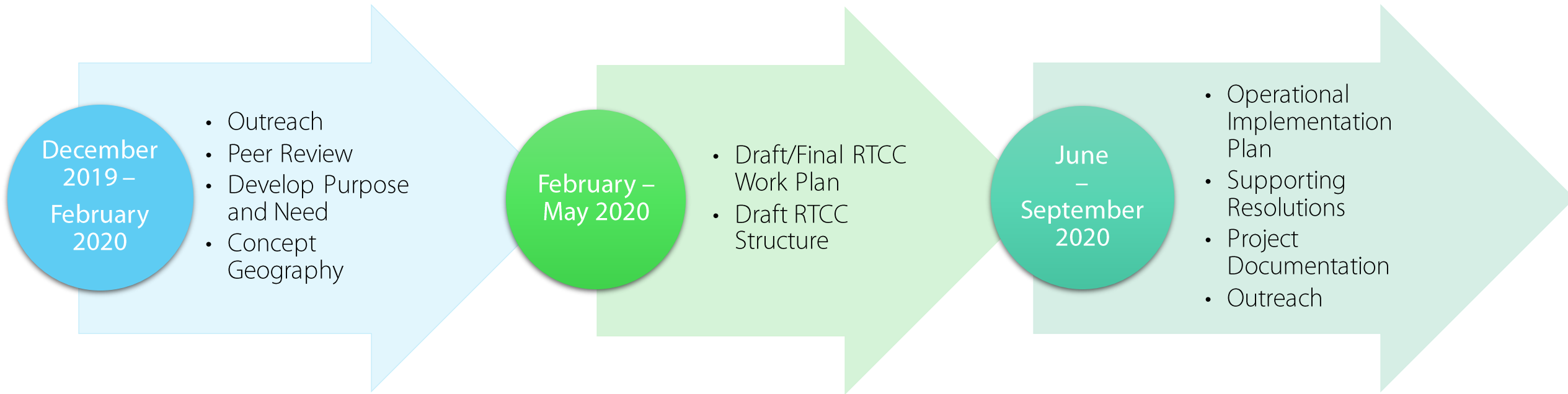
Background

- Focus on all modes of transportation
- Formalize strategies identified in coordination plans and long-range plans
- Improving both mobility and efficiency of services
- Overcoming programmatic silos



Planning Process

Planning Process Timeline



Regional Identified Needs

Highest priority needs

- Fill geographic gaps in service
- Add service earlier/later in the day and/or on weekends
- Increase awareness about transit options

Medium priority needs

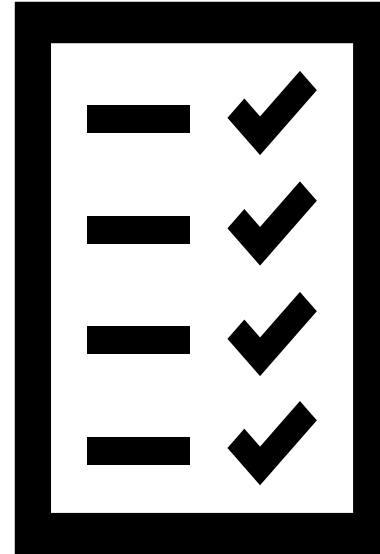
- Establish regular communication among regional stakeholders
- Coordinate trip scheduling with medical providers
- Address barriers to providing service across jurisdictional boundaries

Lower priority needs

- Link local and regional transportation services
- Establish/improve inter-city connections to larger cities like Mankato and Rochester
- Improve fare collection methods for multi-provider/jurisdiction trips

Major Project Tasks

- PMT Meetings
- Stakeholder Engagement
 - Conference Calls
 - Survey
 - In-Person Outreach
 - Open Houses
- Develop RTCC Work Plan
- Develop RTCC Organizational Structure
- Operational Implementation Plan



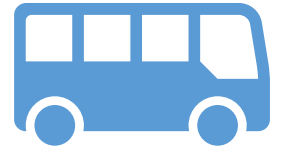
County Board Meetings and Regional Meetings

- Consultant team has provided project briefings to the following organizations:
 - Blue Earth County
 - Watonwan County
 - Brown County
 - Martin County
 - MAPO TAC
 - Faribault County
 - Le Sueur County
 - Nicollet County
 - Region 9 RDC
- Project Requirement: County resolutions of support (4 minimum)

Draft Goals

Goals

1. Identify and understand all available transportation options in the region
2. Improve coordination between transportation providers
3. Identify opportunities for consistent communications for customers of all ages and abilities
4. Support the identification of additional funding sources
5. Increase access to services, education, and centers of commerce
6. Identify opportunities to improve the efficiency of existing transportation service and associated resources



Draft Work Plan

RTCC Support and Administration

RTCC Board

- Tasks:
 - Board meetings
 - Oversee stakeholder engagement
 - Council membership
 - Set funding and staff support
 - Establish and monitor performance measures



Mobility Coordinator

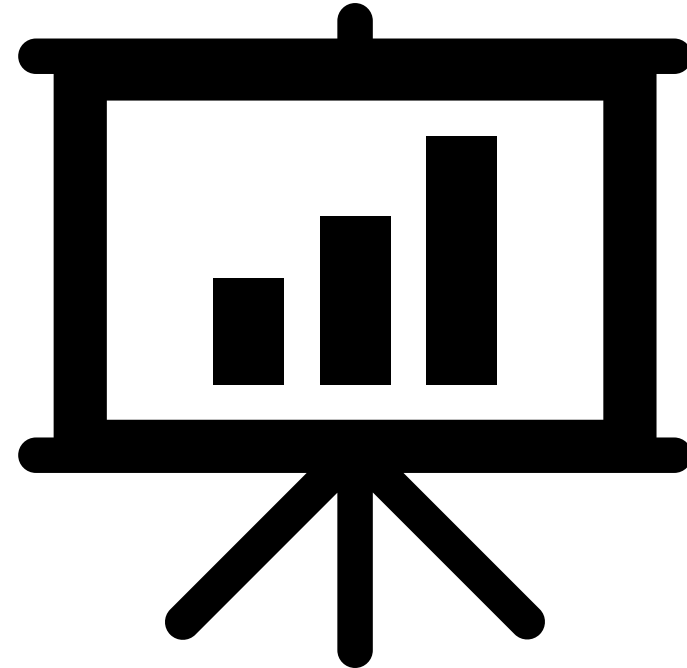
- Implement work plan tasks
- Public engagement
- RTCC engagement
- RTCC partnership development
- Distribute RTCC funds
- Ride coordination



Centralizing Information

- Transportation database
- Inventory of local strategies
- Service evaluation

- Developing a resource for social service agencies and transit customers



Draft Work Plan

Local Coordination Strategies

Coordinate Transportation Services and Resources

- Shared administrative roles
- Administrative support
- Centralized trip planning



Communications, Training, and Organizational Support

- Educational programming
- Marketing assistance
- Health provider outreach
- Regional employer outreach



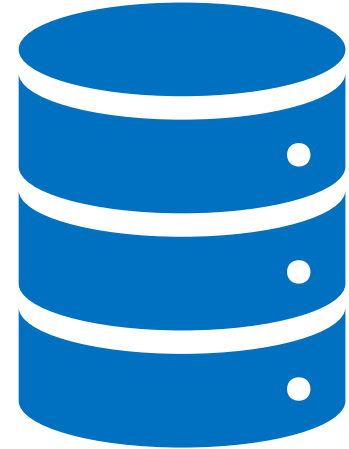
Mobility Strategies

- Improve and expand low-income fare programs
- Implement bus tracking and trip planning technology
- Address geographic coverage issues
- Increase service span



Statewide Coordination Emphasis Areas

- Transportation Management Coordination Center
- Volunteer Driver Programs



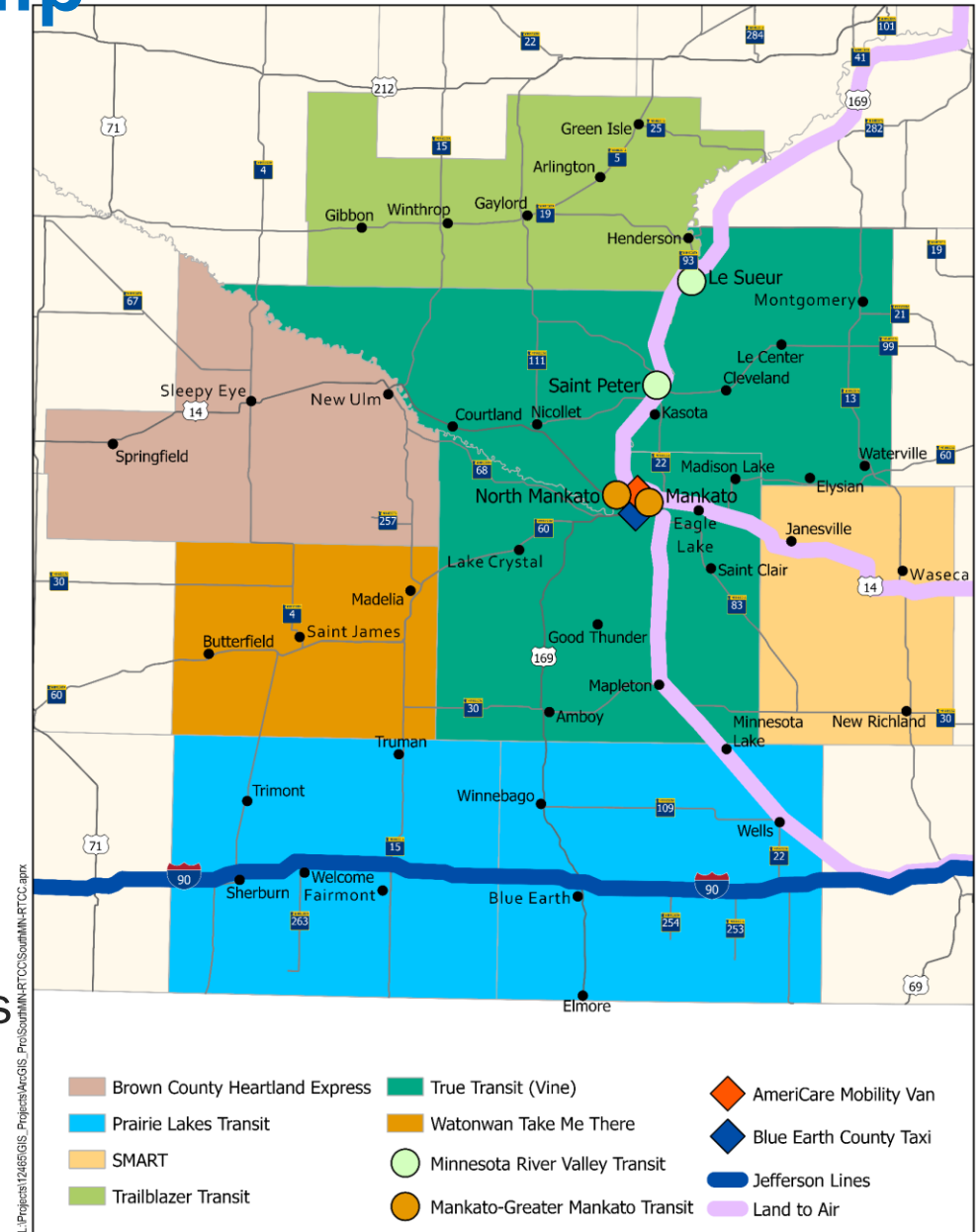
Draft Organizational Structure

RTCC Geography and Membership

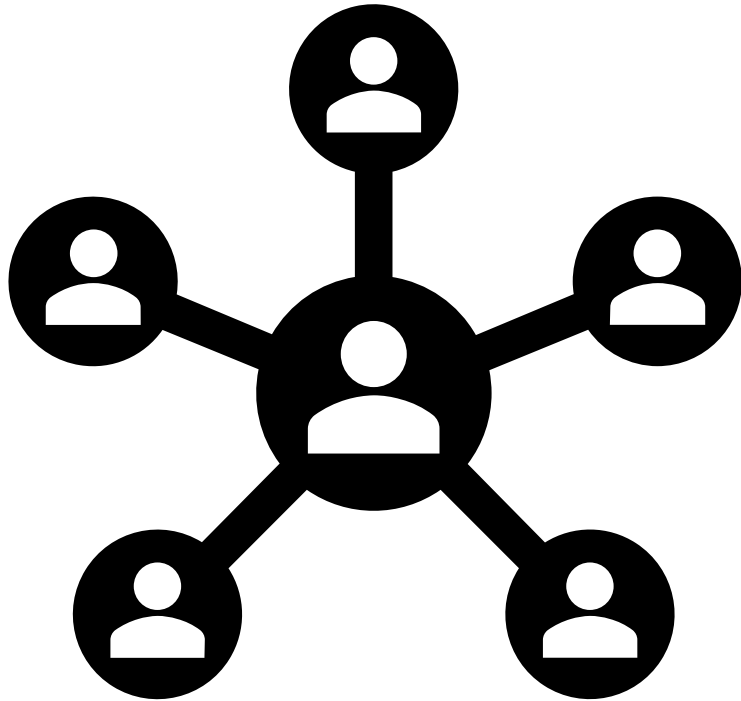
- Representation that includes an 8-County focus area:
 - Blue Earth, Brown, Faribault, Le Sueur, Martin, Nicollet, Waseca and Watonwan Counties.
 - Seeking resolutions of support from as many County Boards as possible.
- Formal host agency and grant recipient to be determined
- RTCC Planning Process has identified a list of over 250 stakeholders that can potentially become members and beneficiaries of an RTCC

RTCC Geography and Membership

- RTCC Stakeholders include:
 - County Representatives (elected and staff)
 - State and Local Transportation Planners
 - Transportation Providers
 - Transportation Users
 - Area Agencies on Aging
 - Youth Development
 - Private funding partners/major employers
 - Educational institutions
 - Health Systems
 - Human and Social Service Agencies
 - Day Training and Habilitation Centers
 - Transportation and Human Service Advocates
 - Workforce and Economic Development professionals

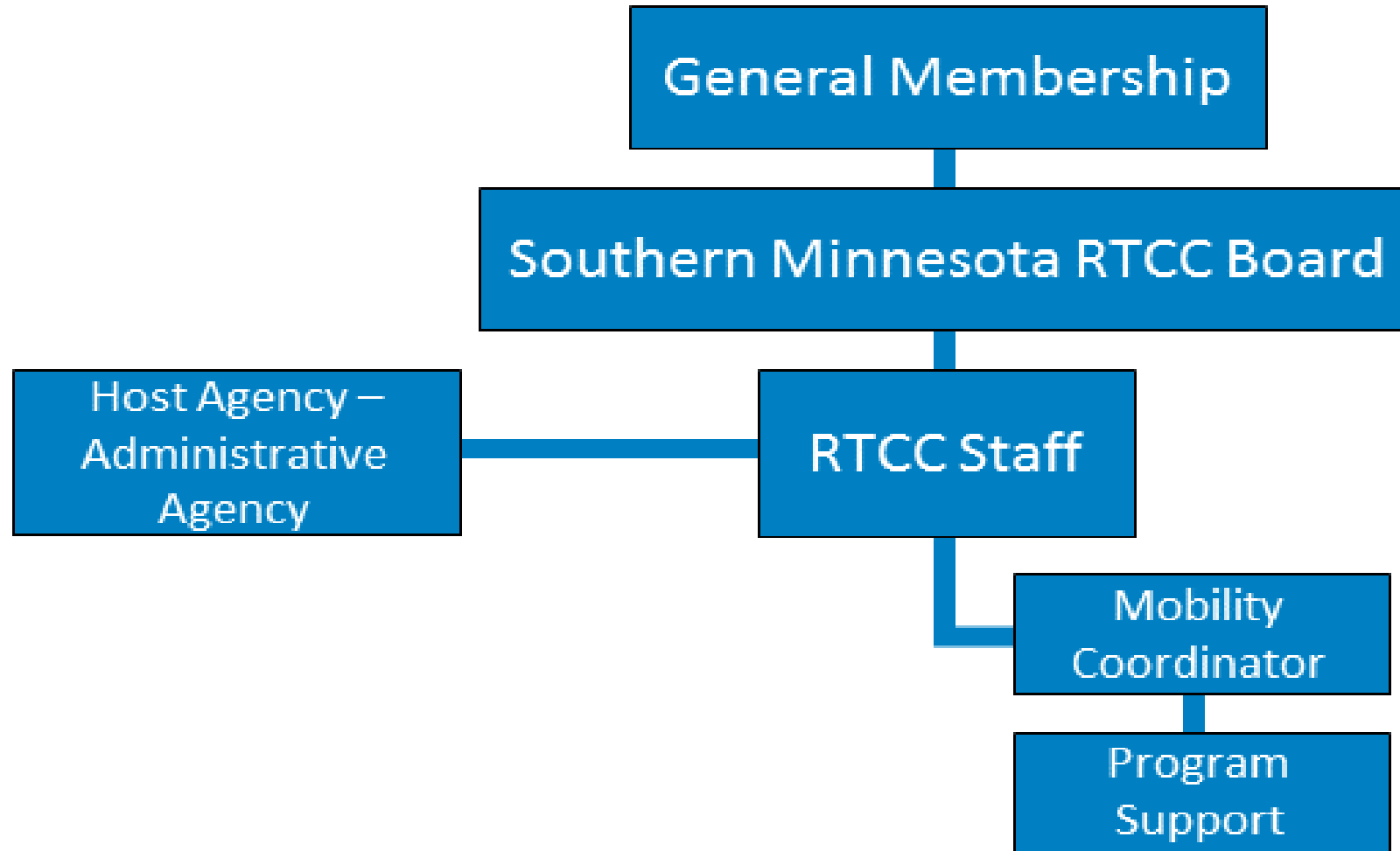


Board Representation



- Recommend the formation of a Steering Committee prior to Phase II that will transition into a formal RTCC Board
- Recommend representation from a variety of groups, but limited to about 2 per county to be inclusive
- Peer RTCC's have used existing board structures as RTCC Boards

Organizational Structure



Organizational Structure

Host Agency

- MnDOT grant recipient/fiscal agent
- Initially will employ RTCC project staff during Phase II
 - May do so long-term if housing at host agency is preferred governance option

RTCC Board

- MAPO/consultant team has been tracking parties interested in board membership
- Mix of County and agency representation
- Quarterly meetings beginning in 2021
- Approximately of 17 board members

Implementation Timeline

Implementation



Complete and approve the Phase I RTCC Planning Process



Transition project to host agency



Complete and submit a Phase II implementation grant application to MnDOT for the Southern Minnesota RTCC



Upon securing Phase II implementation funding, establish the initial RTCC Board after an application process through the steering committee. Schedule first RTCC board meeting.



Develop a staffing structure and review position descriptions for RTCC staff; hire mobility coordinator

Project Next Steps

Next Steps

- Virtual Open Houses (August 18, Early September)
- County Board Resolutions
- Host Agency Selection
- Final PMT Meeting (Early September)
- Operational Implementation Plan (End of September 2020)
- Phase II Grant Application (November 2, 2020)
- Phase II Implementation (January 1, 2021)

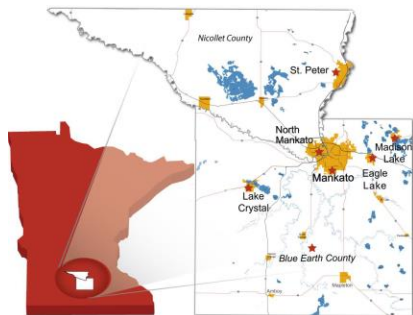
Thank You

Joseph Kapper, AICP

jkapper@srfconsulting.com

Menno Schukking, AICP

mschukking@srfconsulting.com



Contact:

Direct questions and input to:

Charles Androsky, Transportation Planner

Mankato/North Mankato Planning Organization

(507) 387-8389

candrosky@mankatomn.org



RTCC Phase 1 Planning is made possible through a grant from the Minnesota Department of Transportation (MnDOT).